

Flow-Trough Pressure Gauge PsP 50 – 3 FT

ARMANO**With vertical diaphragm****Pressure gauge for UHP applications****T04-000-003**

Pressure Gauges for UHP Applications

A conventional Bourdon tube pressure gauge has significant disadvantages when cleaning the wetted parts due to its geometry, e.g. the closed end of the Bourdon tube.

Our Flow-Through pressure gauge has a diaphragm measuring element. It is equipped with two opposing VCR connections (1 female and 1 male) and an electropolished media chamber free of dead spaces. The rinsing properties are thus significantly improved and the flushing times are considerably reduced. All components in contact with the product are made of stainless steel.

Application

For the pressure measurement of liquid and gaseous media with highest purity specifications.

Standard Versions

Accuracy (DIN EN 837-1)
Class 2.5

Case
Bayonet ring case (model RCh) made of 304 (1.4301),
tight bayonet ring; others upon request (without filling only)

Degree of Protection (DIN EN 60 529/IEC 529)
IP54 unfilled devices

Nominal Case Size
50 mm (2")

Wetted Parts

Diaphragm: Inconel 718
Case: stainless steel 316L (1.4435),
electropolished

Temperature Limitation

Ambient temperature: $-20 / +50$ °C ($-4 / +122$ °F)
Medium temperature: max. $+50$ °C ($+122$ °F)

Surface Qualities

$R_a \leq 0.25$ µm

Case Configuration

Position of the connection: 12 and 6 o'clock
others upon request

Pressure Ranges (DIN EN 837-1)

$-1 / +3$ bar

$-1 / +5$ bar

$-1 / +9$ bar

$-1 / +15$ bar

Other pressure ranges upon request, e.g. $-1 / +1$ bar

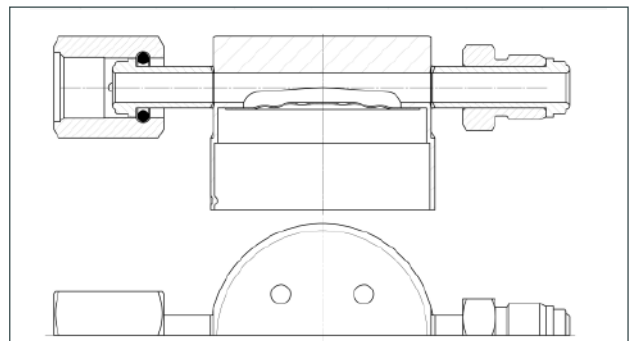
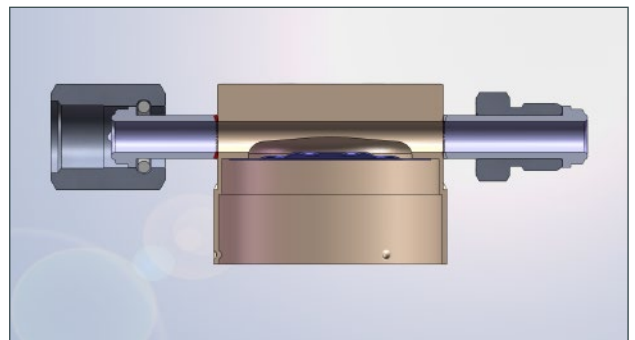
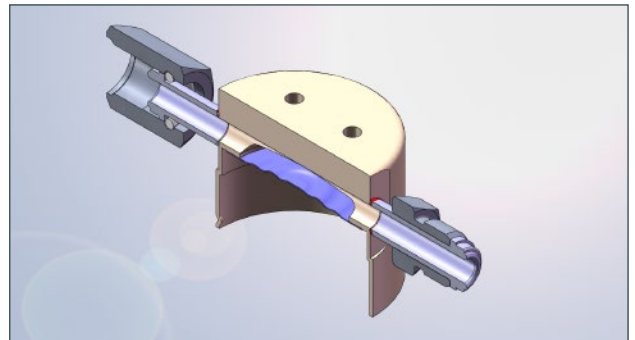
5-times overrange protected up to max. 40 bar

Process Connection

$1/4$ " female x $1/4$ " male VCR or

$1/2$ " female x male VCR

Please specify 12 o'clock: female or male

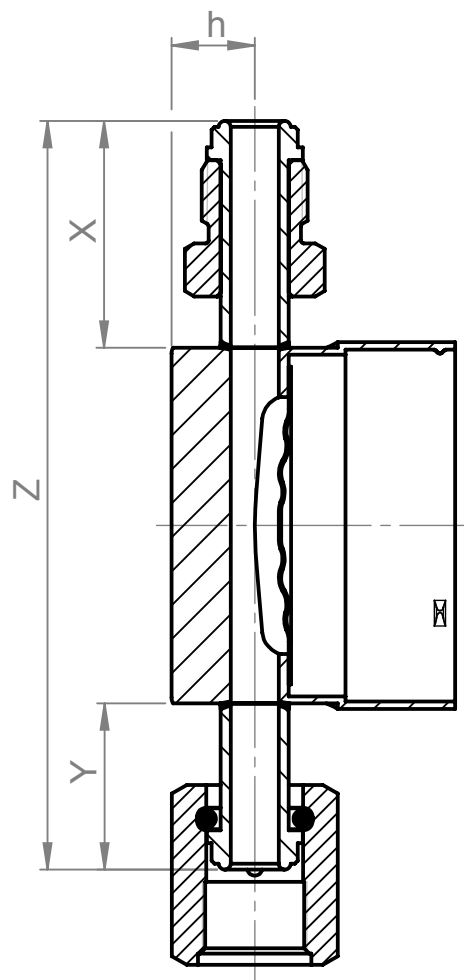


Flow-Trough Pressure Gauge PsP 50 – 3 FT

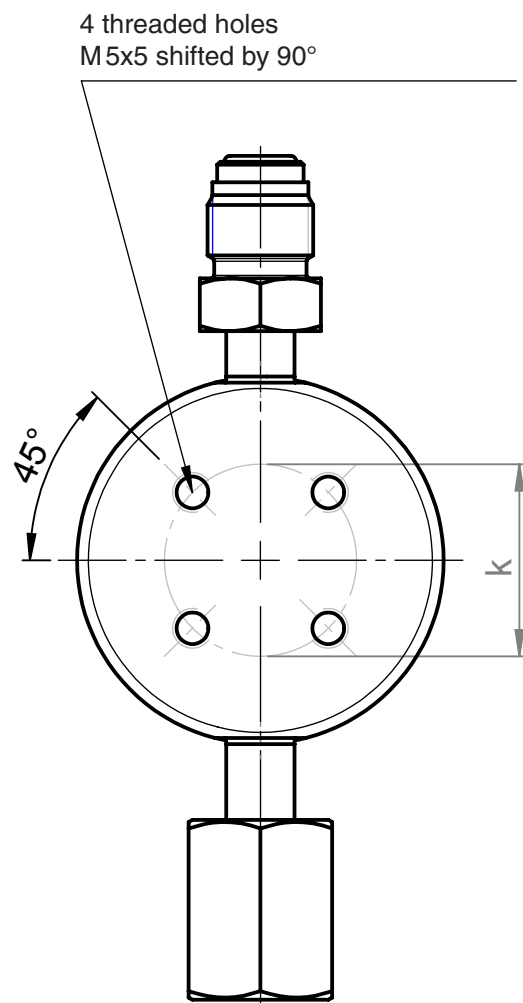
With vertical diaphragm

Pressure gauge for UHP applications

Cross-section



Top View



Dimensional Data (mm/inch)

| Connections | h | k | X | Y | Installation depth gauge Z |
|------------------|-------------|-----------|------------|------------|----------------------------|
| VCRM / VCRF 1/4" | 11 0.43 | 25.4 1 | 27 1.06 | 25 0.98 | 99.0 3.9 |
| VCRM / VCRF 1/2" | 12.8 0.5 | 25.4 1 | 46 1.81 | 28 1.1 | 120.5 4.74 |