

Press. gauge with conn. 7/16"-20 SAE for hydraulic application

T01-000-017

19.06.2002 Ot
Page 1 von 1

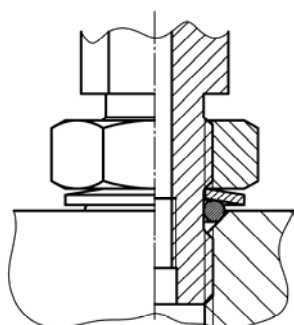
For easy pressure-measuring in hydraulic-components there is a special connection thread, which enables the user to install a pressure gauge directly in a valve-manifold or similar. There are no further parts required but a female thread 7/16"-20 UNF fitting to the gauge.

Another great advantage of this connection is the easy adjustment of the dial for better visual control.

This thread is mainly applied at pressure gauges 2 1/2" with wetted parts brass/bronze, but also 316SS, glycerine filling is available. Connection is bottom resp. lower back or center back. Further technical data can be found on our data-sheet 1211 for series RCh/RChG 63 resp. 1210 for series RCha/RChaG 63.

The supply of the gauge with thread 7/16"-20 includes a Viton o-ring as standard for sealing and a grommet with union nut for fastening, see drawing below. o-ring and grommet can be moved on the stem for easy adjusting the position of the gauge, then they are fastened with the union nut.

Stem of pressure gauge 7/16"-20 SAE with union nut, grommet and o-ring,
attached to a valve-manifold with female thread



Pressure gauge model RChaG 63-1, range 30" HG - 0 -160 psi/double scale kPa
with connection 7/16" SAE for hydraulic service



Sales and Export South, West, North
ARMATURENBAU GmbH
Manometerstraße 5 • D-46487 Wesel - Ginderich
Tel.: +49 (0) 28 03 / 91 30-0 • Fax: +49 (0) 28 03 / 10 35
armaturenbau.com • mail@armaturenbau.com



Subsidiary Company, Sales and Export East
MANOTHERM Beierfeld GmbH
Am Gewerbepark 9 • D-08344 Grünhain-Beierfeld
Tel.: +49 (0) 37 74 / 58-0 • Fax: +49 (0) 37 74 / 58-545
manotherm.com • mail@manotherm.com