

# Mechanical Pressure Measurement

## Absolute pressure gauge APCh 100 – 6

Absolute pressure gauges are suitable for the measurement of liquids and gases. With open flange, they are also suitable for the measurement of viscous, solid-containing media.

Often aggressive media are involved, which place further demands on our instruments and on the wetted parts.

In addition to our absolute pressure gauge APCh (data sheet 3901), upon customer request we have checked the possibility to supply absolute pressure gauges with wetted parts made of Monel.

Yes, we can! We are looking forward to your request.

Monel is considered to be very resistant to corrosion, many acids and especially fluorine  $F_2$ . Even if you require another special material, please contact us so that we can coordinate the details of your application.

### wetted parts made of Monel

#### Features

- ◆ Wetted parts made of Monel, others upon request (e.g. Hastelloy)
- ◆ Helium leak detection up to  $10^{-9}$  mbar l/s
- ◆ All connections welded, no points of leakage

#### Technical Data

##### Version

absolute pressure gauge

##### Case

bayonet ring case  
stainless steel

##### Nominal case size

100, 160 mm (4, 6")

##### Accuracy class

1.6

##### Pressure ranges

from 0 – 25 mbar abs.  
to 0 – 400 mbar abs.

##### Wetted parts

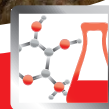
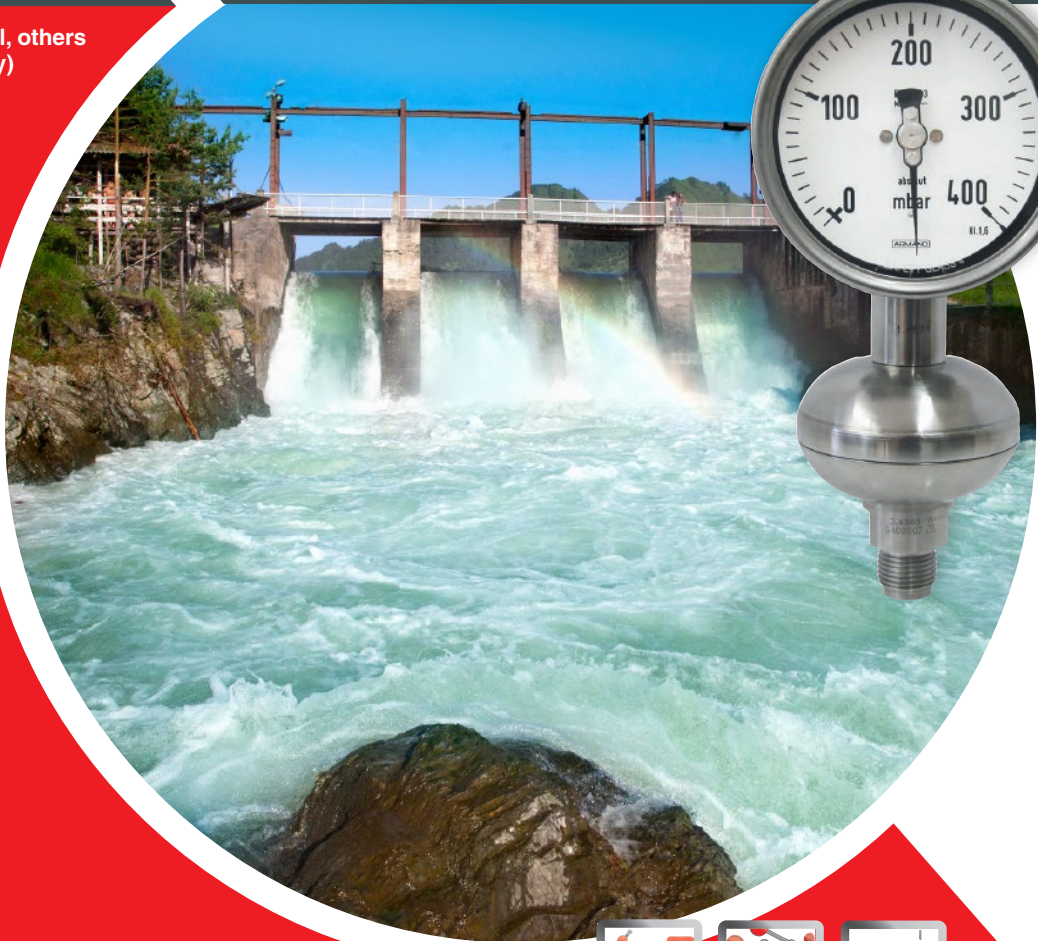
Monel

##### Process connection

G 1/2 B

##### Option

flange connection



# ARMANO Messtechnik GmbH

Location Beierfeld · Germany  
Am Gewerbepark 9  
08344 Grünhain-Beierfeld  
Tel.: +49 2803 9130 – 0

## ARMANO

Location Wesel · Germany  
Manometerstraße 5  
46487 Wesel-Ginderich  
Tel.: +49 2803 9130 – 0

[www.armano-messtechnik.com](http://www.armano-messtechnik.com)

