

Flushing Ring

SpR

Accessory for flange type and cellular type diaphragm seals

Application

Flushing rings for flange and cellular ("pancake") type diaphragm seals (cf. data sheets 7500 and 7505) can be mounted between process connection and chemical seal if media residues or cloggings at the chemical seal connection are to be expected.

The two lateral flushing bores allow for purging of accumulated particles in front of the diaphragm and for ventilation of the pressure chamber.

Standard Versions

Body

Stainless steel 316L (1.4404)

Flushing Bores

2 x ½" NPT

Screw Plugs

2 x ½" NPT, 316L (1.4404), for flushing bores

NACE and Sour Gas Application

The material we use complies with the NACE MR 0175 specifications (NACE MR 0103 upon request). Only material with test certificates is used.

Process Connection

DN 25, 50, 80, 100, PN 16...400
for flanges according to DIN EN 1092-1
with sealing face Form B1, stamped B

NPS 1", 2", 3", 4", Class 150...2500

for flanges according to ASME
sealing face Raised Face (RF) for ASME B 16.5 or JIS B 2220

Sealing

The suitable standardized sealing elements have to be used.
The sealings are not within the scope of delivery.



Special Versions

- Other nominal width upon request
- Other sealing face, e.g. Form B2 according to EN 1092-1 upon request
- Groove or tongue DIN EN 1092-1, RJF groove ASME B 16.5 and others upon request
- Other materials, e.g. 1.4539, Hastelloy B2, C4 or C276, Monel, nickel or titanium upon request
- Other flushing connections, e.g.
 - female thread ¼" NPT, G ½", G ¼",
 - male thread (adapter) ½" NPT, ¼" NPT, G ½B, G ¼B,
 - others upon request
- Tube socket, e.g. VCR

Mounting/Certificates

Information on mounting and certificates is available upon request.

Ordering Information

Please note our detailed ordering information in model overview 7000.

Model	SpR
Material	stainless steel 316L (1.4404)
Flushing connection	½" NPT = standard, others see above
Process connection	DN 25, 50, 80 or 100 ASME NPS 1", 2", 3" or 4"
Specifics	see above

www.armano-messtechnik.com

ARMANO

ARMANO Messtechnik GmbH

Location Beierfeld
Am Gewerbepark 9 • 08344 Grünhain-Beierfeld
Tel.: +49 3774 58 – 0 • Fax: +49 3774 58 – 545
mail@armano-beierfeld.com

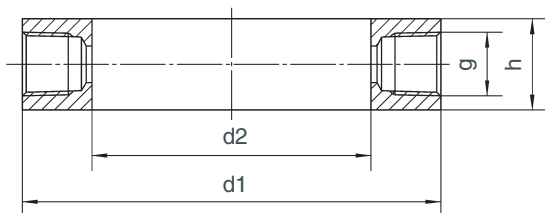
Location Wesel
Manometerstraße 5 • 46487 Wesel-Ginderich
Tel.: +49 2803 9130 – 0 • Fax: +49 2803 1035
mail@armano-wesel.com

7.7001

04/19

Connections, Dimensional Data and Weight

Flushing Ring



Connections according to DIN EN 1092-1, sealing face Form B1

Dimensional Data (mm/inch) and Weights (kg/lb)

DN	PN	d1	d2	g	h	(approx.) weight
25	16...400 bar	68 2.68	25 0.98	½" NPT	30 1.18	0.75 1.65
50		102 4.02	62 2.44			1.10 2.40
80		138 5.43	92 3.62			1.90 4.20
100		162 6.38	92 3.62			3.15 6.90

Connections according to ASME

Dimensional Data (mm/inch) and Weights (kg/lb)

NPS	Class	d1	d2	g	h	(approx.) weight
1"	150...2500	51 2.01	27 1.06	½" NPT	30 1.18	0.30 0.66
2"		92 3.62	62 2.44			0.60 1.30
3"		127 5	92 3.62			1.05 2.30
4"		157 6.18	92 3.62			2.85 6.30

Installation Diagram

chemical seal

sealing

flushing bore
½" NPT

filling plug
½" NPT

sealing

welding flange

