

Standard Version

Information on applications, features, metrological influences as temperature, level difference, floating time and others can be found in model overview 7000. Furthermore you will also find advice on other chemical seal versions.

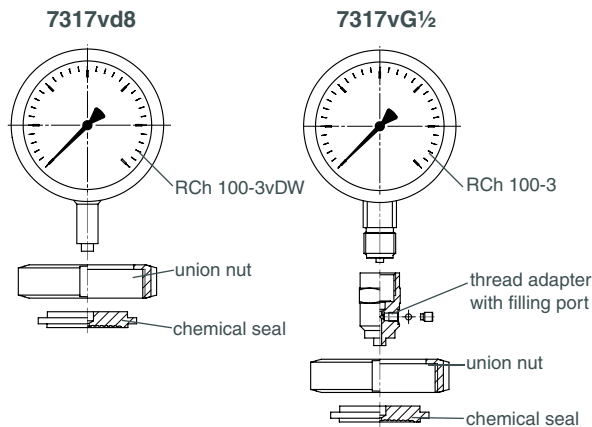
Construction

Model 73..vd8 has an orifice d8 as instrument connection for welding to a pressure gauge with process connection d8x5, e.g. RCh 100-3vDW.

With the welded connection of pressure gauge / chemical seal and a filling port which is not accessible externally no leakage can occur. The parts are easy to clean externally.

Model 73..vG½ has a gauge adapter with a female thread for direct mounting to pressure measuring instruments with male thread. The screwed connections pressure gauge / chemical seal and the filling port may not be loosened, as otherwise the filling fluid leaks and the pressure measuring system loses its functional capability.

Example:



Chemical Seal and Process Connection

1.4435 (316 L stainless steel)

Instrument Connection

73..vd8: orifice d8
73..vG½: G ½ female

Diaphragm

1.4435 (316L stainless steel) flush welded, welded to chemical seal

helium leak detection up to 10^{-9} mbar l/s

Effective diaphragm diameter, see tables on page 2 ff.

Surface Roughness of the Wetted Parts

Ra < 0.8 µm

Union Nut (if applicable)

Stainless steel

Nominal Pressure

See tables on page 2 ff.

Minimum Span Pressure Gauges

See tables on page 2 ff.

t_k-value (mbar /10K) (temperature coefficient of the chemical seal)

See tables on page 2 ff. (for vegetable oil FN 1)



Options

- Wetted parts Ra < 0.4 µm
- Wetted parts electropolished
- Calculation of the temperature-related additional error for the whole measuring system.

Special options among others

- Other instrument connections upon request, but NPT-female thread is not recommendable
- Other material combinations upon request
- Versions according to other norms and nominal sizes upon request

Accessories

Capillary line, cooling elements: see data sheet 7002

Process connection pieces and sealings do not belong to the standard product range, but are available upon request.

Construction / Filling / Certificates

Information concerning mounting, filling and certificates are available upon request.

Ordering Information Chemical Seals

Please regard our detailed ordering information

- in model overview 7000
 - in the check lists for pressure measuring instruments with chemical seals and
 - in the data sheets of the requested pressure measuring instrument and add the information for the particular chemical seal:
 - Model: e.g. MDM 7317.10vd8
 - Nominal size: e.g. DN 40
 - Nominal pressure: e.g. PN 16
- if applicable options: see page 1, e.g. Ra < 0.4 µm

The reference temperature is +20 °C.

Please specify if a +20 °C deviating working temperature (tA) is required or the cleaning temperature (tR) is + 150 °C and above.

Example: pressure gauge...,
chemical seal: MDM 7317.10vd8, DN 40, PN 16, tA +80°C,
wetted parts electropolished

*BioConnect® is a registered word mark of NEUMO GmbH & Co. KG.



Sales and Export South, West, North

ARMATURENBAU GmbH

Manometerstraße 5 • D-46487 Wesel - Ginderich
Tel.: +49 (0)28 03/91 30-0 • Fax: +49 (0) 28 03/ 10 35
armaturenbau.com • mail@armaturenbau.com

Subsidiary Company, Sales and Export East

MANOTHERM Beierfeld GmbH

Am Gewerbepark 9 • D-08344 Grünhain-Beierfeld
Tel.: +49 (0) 37 74/ 58-0 • Fax: +49 (0) 37 74/ 58-545
manotherm.com • mail@manotherm.com

7303
09/12

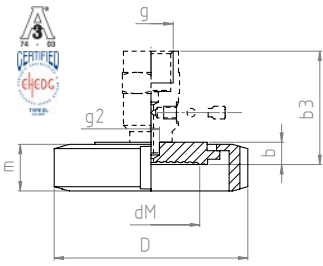
Dimensional Data (mm), Weights (kg), Minimum Span (bar) and t_k -value (mbar /10K)

Groove Union Nut

BioConnect® 4)

MDM 7317v...

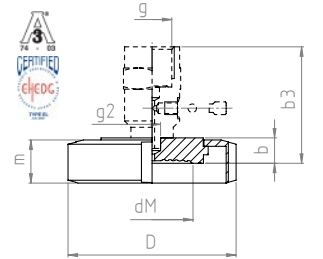
for tubes according to DIN 11 866 – series A (DIN 11 850)



| DN | PN | For tube male-Ø x wall thickness | Tube female-Ø | b | b3 | D | dM | d* | g | g2 | m | Minimum measuring span | tk-value | Weight (approx.) | |
|----|----|----------------------------------|---------------|------|------|------|-----|----|----|-----|----|------------------------|----------|------------------|------|
| | | | | | | | | | | | | | | vd8 | vG ½ |
| 20 | 16 | 23 x 1.5 | 20 | 21.5 | 52.5 | 48 | 17 | 19 | G½ | Ø 8 | 20 | 0 - 4 ³⁾ | 7.80 | 0.10 | 0.23 |
| 25 | | 29 x 1.5 | 26 | | | 55 | 21 | 23 | | | | 0 - 4 ²⁾ | 5.50 | 0.20 | 0.33 |
| 32 | | 35 x 1.5 | 32 | | | 65 | 28 | 30 | | | | 0 - 2.5 ²⁾ | 2.30 | 0.25 | 0.38 |
| 40 | | 41 x 1.5 | 38 | | | | | | | | | 0 - 1 ²⁾ | 1.20 | 0.38 | 0.51 |
| 50 | | 53 x 1.5 | 50 | 22.5 | 53.5 | 70 | 34 | 36 | | | | 0 - 1 ¹⁾ | 0.45 | 0.73 | 0.86 |
| 65 | | 70 x 2 | 66 | | | 82 | 46 | 48 | | | | 0 - 0.6 ¹⁾ | 0.82 | 1.16 | 1.19 |
| 80 | | 85 x 2 | 81 | | | 105 | 60 | 62 | | | | 0 - 0.6 ¹⁾ | 0.64 | 1.44 | 1.57 |
| | | | | | 23.5 | 54.5 | 115 | 72 | | | | 75 | | | |

MDM 7317.1v...

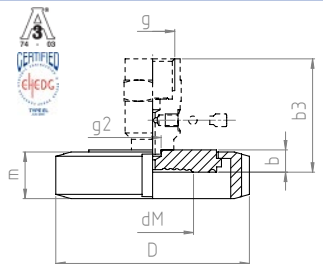
for tubes according to DIN 11 866 – series B (DIN EN ISO 1127)



| DN | PN | For tube male-Ø x wall thickness | Tube female-Ø | b | b3 | D | dM | d* | g | g2 | m | Minimum measuring span | tk-value | Weight (approx.) | |
|------|----|----------------------------------|---------------|------|------|-----|----|----|----|-----|----|------------------------|----------|------------------|---------------------|
| | | | | | | | | | | | | | | vd8 | vG ½ |
| 26.9 | 16 | 26.9 x 1.6 | 23.7 | 21.5 | 52.5 | 48 | 21 | 23 | G½ | Ø 8 | 21 | 0 - 4 ²⁾ | 5.50 | 0.10 | 0.23 |
| 33.7 | | 33.7 x 2 | 29.7 | | | 55 | 26 | 28 | | | | 0 - 2.5 ²⁾ | 2.80 | 0.18 | 0.31 |
| 42.4 | | 42.4 x 2 | 38.4 | | | 65 | 32 | 34 | | | | 0 - 1 ²⁾ | 1.40 | 0.26 | 0.39 |
| 48.3 | | 48.3 x 2 | 44.3 | | | | | | | | | 70 | 38 | 40 | 0 - 1 ²⁾ |
| 60.3 | | 60.3 x 2 | 56.3 | 22.5 | 53.5 | 82 | 52 | 54 | | | | 0 - 1 ¹⁾ | 0.95 | 0.98 | 1.11 |
| 76.1 | | 76.1 x 2 | 72.1 | | | 105 | 66 | 68 | | | | 0 - 0.6 ¹⁾ | 0.73 | 1.20 | 1.33 |
| | | | | | | | | | | | | | | | |

MDM 7317.2v...

for tubes according to DIN 11 866 – series C (ASME-BPE)



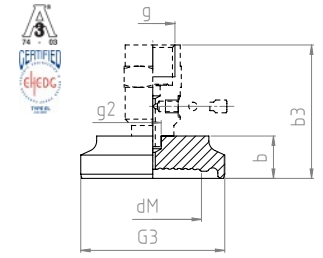
| NPS | PN | For tube male-Ø x wall thickness | Tube female-Ø | b | b3 | D | dM | d* | g | g2 | m | Minimum measuring span | tk-value | Weight (approx.) | |
|-----|----|----------------------------------|---------------|------|------|-----|----|----|----|-----|----|------------------------|----------|------------------|---------------------|
| | | | | | | | | | | | | | | vd8 | vG ½ |
| 1" | 16 | 25.4 x 1.65 | 22.1 | 21.5 | 52.5 | 48 | 19 | 21 | G½ | Ø 8 | 21 | 0 - 2.5 ³⁾ | 6.50 | 0.34 | 0.47 |
| 1½" | | 38.1 x 1.65 | 34.8 | | | 65 | 30 | 32 | | | | 0 - 2.5 ²⁾ | 1.80 | 0.46 | 0.59 |
| 2" | | 50.8 x 1.65 | 47.5 | | | 82 | 45 | 47 | | | | 0 - 1 ²⁾ | 0.45 | 0.80 | 0.93 |
| 2½" | | 63.5 x 1.65 | 60.2 | | | | | | | | | 105 | 56 | 58 | 0 - 1 ¹⁾ |
| 3" | | 76.2 x 1.65 | 72.9 | 23.5 | 54.5 | 105 | 66 | 68 | | | | 0 - 0.6 ¹⁾ | 0.73 | 1.51 | 1.64 |
| | | | | | | | | | | | | | | | |

Thread Connection Pieces

BioConnect® 4)

MDM 7317.10v...

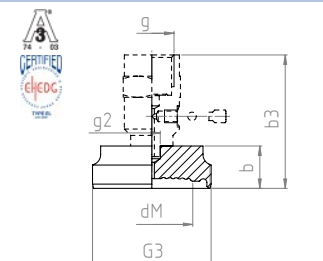
for tubes according to DIN 11 866 – series A (DIN 11 850)



| DN | PN | For tube male-Ø x wall thickness | Tube female-Ø | b | b3 | dM | d* | g | g2 | G3 | Minimum measuring span | tk-value | Weight (approx.) | |
|----|----|----------------------------------|---------------|------|------|----|----|----|-----|-----------|------------------------|----------|------------------|------|
| | | | | | | | | | | | | | vd8 | vG ½ |
| 20 | 16 | 23 x 1.5 | 20 | 20 | 63 | 17 | 19 | G½ | Ø 8 | M 36 x 2 | 0 - 4 ³⁾ | 7.80 | 0.23 | 0.26 |
| 25 | | 29 x 1.5 | 26 | | | 21 | 23 | | | M 42 x 2 | 0 - 4 ²⁾ | 5.50 | 0.27 | 0.40 |
| 32 | | 35 x 1.5 | 32 | | | 28 | 30 | | | M 52 x 2 | 0 - 2.5 ²⁾ | 2.30 | 0.31 | 0.44 |
| 40 | | 41 x 1.5 | 38 | | | | | | | M 56 x 2 | 0 - 1 ²⁾ | 1.20 | 0.47 | 0.60 |
| 50 | | 53 x 1.5 | 50 | 22.5 | 53.5 | 46 | 48 | | | M 68 x 2 | 0 - 1 ¹⁾ | 0.45 | 0.53 | 0.66 |
| 65 | | 70 x 2 | 66 | | | 60 | 62 | | | M 90 x 3 | 0 - 0.6 ¹⁾ | 0.82 | 1.08 | 1.21 |
| 80 | | 85 x 2 | 81 | | | 72 | 75 | | | M 100 x 3 | 0 - 0.6 ¹⁾ | 0.64 | 1.51 | 1.64 |
| | | | | | | | | | | | | | | |

MDM 7317.11v...

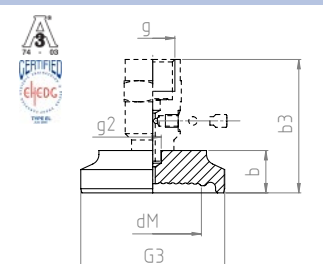
for tubes according to DIN 11 866 – series B (DIN EN ISO 1127)



| DN | PN | For tube male-Ø x wall thickness | Tube female-Ø | b | b3 | dM | d* | g | g2 | G3 | Minimum measuring span | tk-value | Weight (approx.) | |
|------|----|----------------------------------|---------------|------|------|----|----|----|-----|----------|------------------------|----------|------------------|------|
| | | | | | | | | | | | | | vd8 | vG ½ |
| 26.9 | 16 | 26.9 x 1.6 | 23.7 | 20 | 63 | 21 | 23 | G½ | Ø 8 | M 36 x 2 | 0 - 4 ²⁾ | 5.50 | 0.27 | 0.40 |
| 33.7 | | 33.7 x 2 | 29.7 | | | 26 | 28 | | | M 42 x 2 | 0 - 2.5 ²⁾ | 2.80 | 0.31 | 0.44 |
| 42.4 | | 42.4 x 2 | 38.4 | | | 32 | 34 | | | M 52 x 2 | 0 - 1 ²⁾ | 1.40 | 0.47 | 0.60 |
| 48.3 | | 48.3 x 2 | 44.3 | | | | | | | M 56 x 2 | 0 - 1 ²⁾ | 0.80 | 0.53 | 0.66 |
| 60.3 | | 60.3 x 2 | 56.3 | 22.5 | 53.5 | 52 | 54 | | | M 68 x 2 | 0 - 1 ¹⁾ | 0.95 | 1.08 | 1.21 |
| 76.1 | | 76.1 x 2 | 72.1 | | | 66 | 68 | | | M 90 x 3 | 0 - 0.6 ¹⁾ | 0.73 | 1.51 | 1.64 |
| | | | | | | | | | | | | | | |

MDM 7317.12v...

for tubes according to DIN 11 866 – series C (ASME-BPE)



| NPS | PN | For tube male-Ø x wall thickness | Tube female-Ø | b | b3 | dM | d* | g | g2 | G3 | Minimum measuring span | tk-value | Weight (approx.) | |
|-----|----|----------------------------------|---------------|----|----|----------|-----------------------|----|-----|----------|------------------------|----------|---------------------|------|
| | | | | | | | | | | | | | vd8 | vG ½ |
| 1" | 16 | 25.4 x 1.65 | 22.1 | 20 | 63 | 19 | 21 | G½ | Ø 8 | M 36 x 2 | 0 - 2.5 ³⁾ | 6.50 | 0.31 | 0.44 |
| 1½" | | 38.1 x 1.65 | 34.8 | | | 32 | 34 | | | M 52 x 2 | 0 - 1 ²⁾ | 1.40 | 0.47 | 0.60 |
| 2" | | 50.8 x 1.65 | 47.5 | | | 45 | 47 | | | M 68 x 2 | 0 - 1 ²⁾ | 0.45 | 0.53 | 0.66 |
| 2½" | | 63.5 x 1.65 | 60.2 | | | | | | | 52 | 54 | M 90 x 3 | 0 - 1 ¹⁾ | 0.95 |
| 3" | | 76.2 x 1.65 | 72.9 | 66 | 68 | M 90 x 3 | 0 - 0.6 ¹⁾ | | | 0.73 | 1.51 | 1.64 | | |
| | | | | | | | | | | | | | | |

¹⁾ for bourdon tube pressure gauge NG 100

²⁾ for bourdon tube pressure gauge RCh / RChG 100-3 without limit switch contact assembly

³⁾ for bourdon tube pressure gauge RCh / RChG 63-3 without limit switch contact assembly

⁴⁾ BioConnect® is a registered word mark of NEUMO GmbH & Co. KG.

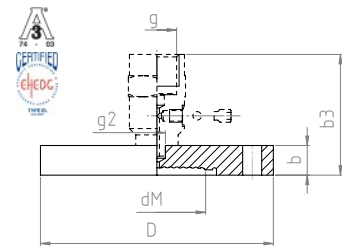
* = external diameter diaphragm

Dimensional Data (mm), Weights (kg), Minimum Span (bar) and t_k -value (mbar /10K)

Female Face Flange

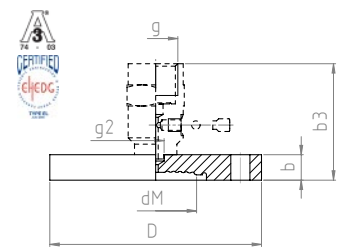
BioConnect® 4)

MDM 7394.1v... for tubes according to DIN 11 866 – series A (DIN 11 850)



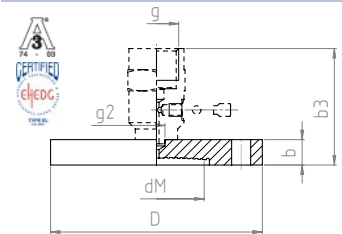
| DN | PN | For tube male-Ø x wall thickness | Tube female-Ø | b | b3 | D | dM | d* | g | g2 | Minimum measuring span | tk-value | Weight (approx.) | |
|----|----|----------------------------------|---------------|-----|----|----|-----------------------|------|----|-----|------------------------|----------|------------------|------|
| | | | | | | | | | | | | | vd8 | vG ½ |
| 20 | 16 | 23 x 1.5 | 20 | 24 | 55 | 80 | 17 | 19 | G½ | Ø 8 | 0 - 4 ³⁾ | 7.80 | 0.22 | 0.35 |
| 25 | | 29 x 1.5 | 26 | | | 85 | 21 | 23 | | | 0 - 4 ²⁾ | 5.50 | 0.27 | 0.40 |
| 32 | | 35 x 1.5 | 32 | | | 95 | 28 | 30 | | | 0 - 2.5 ²⁾ | 2.30 | 0.42 | 0.55 |
| 40 | | 41 x 1.5 | 38 | 100 | 34 | 36 | 0 - 1 ²⁾ | 1.20 | | | 0.86 | 0.99 | | |
| 50 | | 53 x 1.5 | 50 | 110 | 46 | 48 | 0 - 1 ¹⁾ | 0.45 | | | 0.97 | 1.10 | | |
| 65 | | 70 x 2 | 66 | 140 | 60 | 62 | 0 - 0.6 ¹⁾ | 0.82 | | | 1.06 | 1.19 | | |
| 80 | | 85 x 2 | 81 | 150 | 72 | 75 | 0 - 0.6 ¹⁾ | 0.64 | | | 1.20 | 1.33 | | |

MDM 7394.11v... for tubes according to DIN 11 866 – series B (DIN EN ISO 1127)



| DN | PN | For tube male-Ø x wall thickness | Tube female-Ø | b | b3 | D | dM | d* | g | g2 | Minimum measuring span | tk-value | Weight (approx.) | |
|------|----|----------------------------------|---------------|-----|----|----|-----------------------|------|----|-----|------------------------|----------|------------------|------|
| | | | | | | | | | | | | | vd8 | vG ½ |
| 26.9 | 16 | 26.9 x 1.6 | 23.7 | 24 | 55 | 80 | 21 | 23 | G½ | Ø 8 | 0 - 4 ²⁾ | 5.50 | 0.10 | 0.23 |
| 33.7 | | 33.7 x 2 | 29.7 | | | 85 | 26 | 28 | | | 0 - 2.5 ²⁾ | 2.80 | 0.20 | 0.33 |
| 42.4 | | 42.4 x 2 | 38.4 | | | 95 | 32 | 34 | | | 0 - 1 ²⁾ | 1.40 | 0.57 | 0.70 |
| 48.3 | | 48.3 x 2 | 44.3 | 100 | 38 | 40 | 0 - 1 ²⁾ | 0.80 | | | 0.68 | 0.81 | | |
| 60.3 | | 60.3 x 2 | 56.3 | 110 | 52 | 54 | 0 - 1 ¹⁾ | 0.95 | | | 0.77 | 0.90 | | |
| 76.1 | | 76.1 x 2 | 72.1 | 140 | 66 | 68 | 0 - 0.6 ¹⁾ | 0.73 | | | 0.91 | 1.04 | | |

MDM 7394.12v... for tubes according to DIN 11 866 – series C (ASME-BPE)

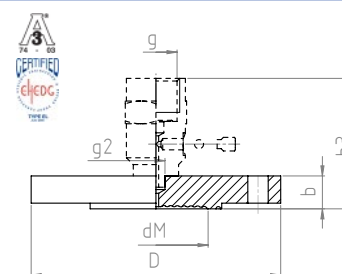


| NPS | PN | For tube male-Ø x wall thickness | Tube female-Ø | b | b3 | D | dM | d* | g | g2 | Minimum measuring span | tk-value | Weight (approx.) | |
|-----|----|----------------------------------|---------------|-----|----|-----|-----------------------|------|----|-----|------------------------|----------|------------------|------|
| | | | | | | | | | | | | | vd8 | vG ½ |
| 1" | 16 | 25.4 x 1.65 | 22.1 | 24 | 55 | 80 | 19 | 21 | G½ | Ø 8 | 0 - 2.5 ³⁾ | 6.50 | 0.20 | 0.33 |
| 1½" | | 38.1 x 1.65 | 34.8 | | | 100 | 30 | 32 | | | 0 - 2.5 ²⁾ | 1.80 | 0.57 | 0.70 |
| 2" | | 50.8 x 1.65 | 47.5 | | | 110 | 45 | 47 | | | 0 - 1 ²⁾ | 0.45 | 0.68 | 0.81 |
| 2½" | | 63.5 x 1.65 | 60.2 | 140 | 56 | 58 | 0 - 1 ¹⁾ | 0.90 | | | 0.77 | 0.90 | | |
| 3" | | 76.2 x 1.65 | 72.9 | 150 | 66 | 68 | 0 - 0.6 ¹⁾ | 0.73 | | | 0.91 | 1.04 | | |

Male Face Flange

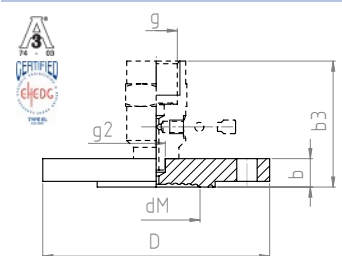
BioConnect® 4)

MDM 7394v... for tubes according to DIN 11 866 – series A (DIN 11 850)



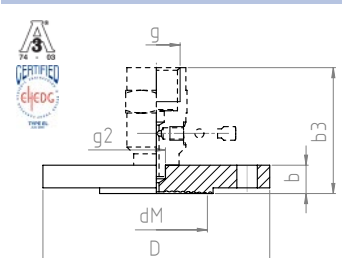
| DN | PN | For tube male-Ø x wall thickness | Tube female-Ø | b | b3 | D | dM | d* | g | g2 | Minimum measuring span | tk-value | Weight (approx.) | |
|----|----|----------------------------------|---------------|------|------|----|-----------------------|------|----|-----|------------------------|----------|------------------|------|
| | | | | | | | | | | | | | vd8 | vG ½ |
| 20 | 16 | 23 x 1.5 | 20 | 12.5 | 55.5 | 80 | 17 | 19 | G½ | Ø 8 | 0 - 4 ³⁾ | 7.80 | 0.45 | 0.58 |
| 25 | | 29 x 1.5 | 26 | | | 85 | 21 | 23 | | | 0 - 4 ²⁾ | 5.50 | 0.50 | 0.63 |
| 32 | | 35 x 1.5 | 32 | | | 95 | 28 | 30 | | | 0 - 2.5 ²⁾ | 2.30 | 0.54 | 0.67 |
| 40 | | 41 x 1.5 | 38 | 100 | 34 | 36 | 0 - 1 ²⁾ | 1.20 | | | 0.62 | 0.75 | | |
| 50 | | 53 x 1.5 | 50 | 110 | 46 | 48 | 0 - 1 ¹⁾ | 0.45 | | | 0.77 | 0.90 | | |
| 65 | | 70 x 2 | 66 | 140 | 60 | 62 | 0 - 0.6 ¹⁾ | 0.82 | | | 0.90 | 1.03 | | |
| 80 | | 85 x 2 | 81 | 150 | 72 | 75 | 0 - 0.6 ¹⁾ | 0.64 | | | 1.37 | 1.50 | | |

MDM 7394.21v... for tubes according to 11 866 – series B (DIN EN ISO 1127)



| DN | PN | For tube male-Ø x wall thickness | Tube female-Ø | b | b3 | D | dM | d* | g | g2 | Minimum measuring span | tk-value | Weight (approx.) | |
|------|----|----------------------------------|---------------|------|------|----|-----------------------|------|----|-----|------------------------|----------|------------------|------|
| | | | | | | | | | | | | | vd8 | vG ½ |
| 26.9 | 16 | 26.9 x 1.6 | 23.7 | 12.5 | 55.5 | 80 | 21 | 23 | G½ | Ø 8 | 0 - 4 ²⁾ | 5.50 | 0.42 | 0.55 |
| 33.7 | | 33.7 x 2 | 29.7 | | | 85 | 26 | 28 | | | 0 - 2.5 ²⁾ | 2.80 | 0.48 | 0.61 |
| 42.4 | | 42.4 x 2 | 38.4 | | | 95 | 32 | 34 | | | 0 - 1 ²⁾ | 1.40 | 0.54 | 0.67 |
| 48.3 | | 48.3 x 2 | 44.3 | 100 | 38 | 40 | 0 - 1 ²⁾ | 0.80 | | | 0.63 | 0.76 | | |
| 60.3 | | 60.3 x 2 | 56.3 | 110 | 52 | 54 | 0 - 1 ¹⁾ | 0.95 | | | 0.73 | 0.86 | | |
| 76.1 | | 76.1 x 2 | 72.1 | 140 | 66 | 68 | 0 - 0.6 ¹⁾ | 0.73 | | | 0.94 | 1.07 | | |

MDM 7394.22v... for tubes according to DIN 11 866 – series C (ASME-BPE)



| NPS | PN | For tube male-Ø x wall thickness | Tube female-Ø | b | b3 | D | dM | d* | g | g2 | Minimum measuring span | tk-value | Weight (approx.) | |
|-----|----|----------------------------------|---------------|------|------|-----|-----------------------|------|----|-----|------------------------|----------|------------------|------|
| | | | | | | | | | | | | | vd8 | vG ½ |
| 1" | 16 | 25.4 x 1.65 | 22.1 | 12.5 | 55.5 | 80 | 19 | 21 | G½ | Ø 8 | 0 - 2.5 ³⁾ | 6.50 | 0.48 | 0.61 |
| 1½" | | 38.1 x 1.65 | 34.8 | | | 100 | 30 | 32 | | | 0 - 2.5 ²⁾ | 1.80 | 0.54 | 0.67 |
| 2" | | 50.8 x 1.65 | 47.5 | | | 110 | 45 | 47 | | | 0 - 1 ²⁾ | 0.45 | 0.63 | 0.76 |
| 2½" | | 63.5 x 1.65 | 60.2 | 140 | 56 | 58 | 0 - 1 ¹⁾ | 0.90 | | | 0.73 | 0.86 | | |
| 3" | | 76.2 x 1.65 | 72.9 | 150 | 66 | 68 | 0 - 0.6 ¹⁾ | 0.73 | | | 0.94 | 1.07 | | |

¹⁾ for bourdon tube pressure gauge NG 100

²⁾ for bourdon tube pressure gauge RCh / RChG 100-3 without limit switch contact assembly

³⁾ for bourdon tube pressure gauge RCh / RChG 63-3 without limit switch contact assembly

⁴⁾ BioConnect® is a registered word mark of NEUMO GmbH & Co. KG.

* = external diameter diaphragm

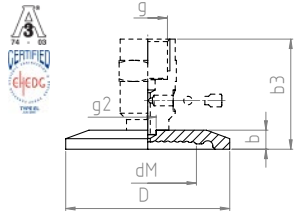
Dimensional Data (mm), Weights (kg), Minimum Span (bar) and t_k -value (mbar /10K)

Female Face Clamp

BioConnect® 4)

MDM 7340.44v...

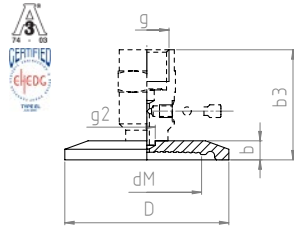
for tubes according to DIN 11 866 – series A (DIN 11 850)



| DN | PN | For tube male-Ø x wall thickness | Tube female-Ø | b | b3 | D | dM | d* | g | g2 | Minimum measuring span | tk-value | Weight (approx.) | |
|----|----|----------------------------------|---------------|------|------|------|----|----|-----------------------|------|------------------------|----------|------------------|------|
| | | | | | | | | | | | | | vd8 | vG ½ |
| 20 | 16 | 23 x 1.5 | 20 | 21.5 | 52.5 | 50.4 | 17 | 19 | G½ | Ø 8 | 0 - 4 ³⁾ | 7.80 | 0.08 | 0.21 |
| 25 | | 29 x 1.5 | 26 | | | | 21 | 23 | | | 0 - 4 ²⁾ | 5.50 | 0.10 | 0.23 |
| 32 | | 35 x 1.5 | 32 | | | | 28 | 30 | | | 0 - 2.5 ²⁾ | 2.30 | 0.12 | 0.25 |
| 40 | | 41 x 1.5 | 38 | | | | 34 | 36 | | | 0 - 1 ²⁾ | 1.20 | 0.19 | 0.32 |
| 50 | | 53 x 1.5 | 50 | | | | 46 | 48 | | | 0 - 1 ¹⁾ | 0.45 | 0.33 | 0.49 |
| 65 | 10 | 70 x 2 | 66 | 23.5 | 54.5 | 90.9 | 60 | 62 | 0 - 0.6 ¹⁾ | 0.82 | 0.41 | 0.54 | | |
| 80 | | 85 x 2 | 81 | | | 106 | 72 | 75 | 0 - 0.6 ¹⁾ | 0.64 | 0.55 | 0.68 | | |

MDM 7340.45v...

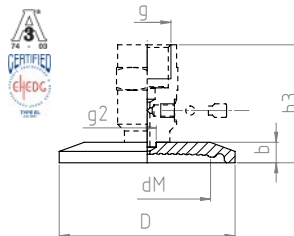
for tubes according to DIN 11 866 – series B (DIN EN ISO 1127)



| DN | PN | For tube male-Ø x wall thickness | Tube female-Ø | b | b3 | D | dM | d* | g | g2 | Minimum measuring span | tk-value | Weight (approx.) | |
|------|----|----------------------------------|---------------|------|------|------|-----------------------|------|------|------|------------------------|----------|------------------|------|
| | | | | | | | | | | | | | vd8 | vG ½ |
| 26.9 | 16 | 26.9 x 1.6 | 23.7 | 21.5 | 52.5 | 50.4 | 21 | 23 | G½ | Ø 8 | 0 - 4 ²⁾ | 5.50 | 0.08 | 0.11 |
| 33.7 | | 33.7 x 2 | 29.7 | | | | 26 | 28 | | | 0 - 2.5 ²⁾ | 2.80 | 0.18 | 0.21 |
| 42.4 | | 42.4 x 2 | 38.4 | | | | 32 | 34 | | | 0 - 1 ²⁾ | 1.40 | 0.13 | 0.26 |
| 48.3 | | 48.3 x 2 | 44.3 | | | | 38 | 40 | | | 0 - 1 ²⁾ | 0.80 | 0.23 | 0.36 |
| 60.3 | | 60.3 x 2 | 56.3 | | | | 52 | 54 | | | 0 - 1 ¹⁾ | 0.95 | 0.28 | 0.41 |
| 76.1 | 10 | 76.1 x 2 | 72.1 | 90.9 | 66 | 68 | 0 - 0.6 ¹⁾ | 0.73 | 0.43 | 0.55 | | | | |

MDM 7340.46v...

for tubes according to DIN 11 866 – series C (ASME-BPE)



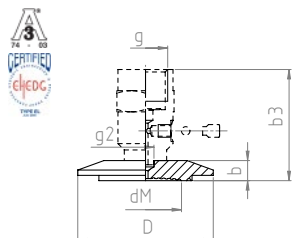
| NPS | PN | For tube male-Ø x wall thickness | Tube female-Ø | b | b3 | D | dM | d* | g | g2 | Minimum measuring span | tk-value | Weight (approx.) | | |
|-----|----|----------------------------------|---------------|------|------|------|-----------------------|------|------|------|------------------------|---------------------|------------------|------|------|
| | | | | | | | | | | | | | vd8 | vG ½ | |
| 1" | 16 | 25.4 x 1.65 | 22.1 | 21.5 | 52.5 | 50.4 | 19 | 21 | G½ | Ø 8 | 0 - 2.5 ³⁾ | 6.50 | 0.18 | 0.21 | |
| 1½" | | 38.1 x 1.65 | 34.8 | | | | 30 | 32 | | | 0 - 2.5 ²⁾ | 1.80 | 0.13 | 0.26 | |
| 2" | | 50.8 x 1.65 | 47.5 | | | | 64 | 45 | | | 47 | 0 - 1 ²⁾ | 0.45 | 0.23 | 0.36 |
| 2½" | | 63.5 x 1.65 | 60.2 | | | | 77.4 | 56 | | | 58 | 0 - 1 ¹⁾ | 0.90 | 0.28 | 0.41 |
| 3" | 10 | 76.2 x 1.65 | 72.9 | 90.9 | 66 | 68 | 0 - 0.6 ¹⁾ | 0.73 | 0.43 | 0.55 | | | | | |

Male Face Clamp

BioConnect® 4)

MDM 7340.5v...

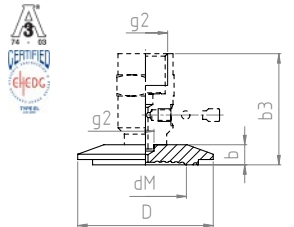
for tubes according to DIN 11 866 – series A (DIN 11 850)



| DN | PN | For tube male-Ø x wall thickness | Tube female-Ø | b | b3 | D | dM | d* | g | g2 | Minimum measuring span | tk-value | Weight (approx.) | |
|----|----|----------------------------------|---------------|----|----|------|----|----|-----------------------|------|------------------------|----------|------------------|------|
| | | | | | | | | | | | | | vd8 | vG ½ |
| 20 | 16 | 23 x 1.5 | 20 | 21 | 52 | 50.5 | 17 | 19 | G½ | Ø 8 | 0 - 4 ³⁾ | 7.80 | 0.07 | 0.20 |
| 25 | | 29 x 1.5 | 26 | | | | 21 | 23 | | | 0 - 4 ²⁾ | 5.50 | 0.10 | 0.23 |
| 32 | | 35 x 1.5 | 32 | | | | 28 | 30 | | | 0 - 2.5 ²⁾ | 2.30 | 0.17 | 0.30 |
| 40 | | 41 x 1.5 | 38 | | | | 34 | 36 | | | 0 - 1 ²⁾ | 1.20 | 0.22 | 0.35 |
| 50 | | 53 x 1.5 | 50 | | | | 46 | 48 | | | 0 - 1 ¹⁾ | 0.45 | 0.30 | 0.43 |
| 65 | 10 | 70 x 2 | 66 | 23 | 54 | 91 | 60 | 62 | 0 - 0.6 ¹⁾ | 0.82 | 0.52 | 0.65 | | |
| 80 | | 85 x 2 | 81 | | | 106 | 72 | 75 | 0 - 0.6 ¹⁾ | 0.64 | 0.60 | 0.73 | | |

MDM 7340.9v...

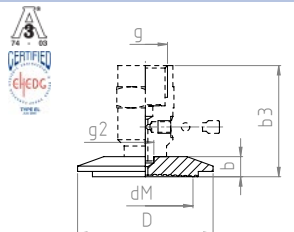
for tubes according to 11 866 – series B (DIN EN ISO 1127)



| DN | PN | For tube male-Ø x wall thickness | Tube female-Ø | b | b3 | D | dM | d* | g | g2 | Minimum measuring span | tk-value | Weight (approx.) | |
|------|----|----------------------------------|---------------|------|----|------|-----------------------|------|------|------|------------------------|----------|------------------|------|
| | | | | | | | | | | | | | vd8 | vG ½ |
| 26.9 | 16 | 26.9 x 1.6 | 23.7 | 21 | 52 | 50.4 | 21 | 23 | G½ | Ø 8 | 0 - 4 ²⁾ | 5.50 | 0.06 | 0.19 |
| 33.7 | | 33.7 x 2 | 29.7 | | | | 26 | 28 | | | 0 - 2.5 ²⁾ | 2.80 | 0.10 | 0.23 |
| 42.4 | | 42.4 x 2 | 38.4 | | | | 32 | 34 | | | 0 - 1 ²⁾ | 1.40 | 0.14 | 0.27 |
| 48.3 | | 48.3 x 2 | 44.3 | | | | 38 | 40 | | | 0 - 1 ²⁾ | 0.80 | 0.20 | 0.33 |
| 60.3 | | 60.3 x 2 | 56.3 | | | | 52 | 54 | | | 0 - 1 ¹⁾ | 0.95 | 0.12 | 0.45 |
| 76.1 | 10 | 76.1 x 2 | 72.1 | 90.9 | 66 | 68 | 0 - 0.6 ¹⁾ | 0.73 | 0.40 | 0.53 | | | | |

MDM 7340.15v...

for tubes according to DIN 11 866 – series C (ASME-BPE)



| NPS | PN | For tube male-Ø x wall thickness | Tube female-Ø | b | b3 | D | dM | d* | g | g2 | Minimum measuring span | tk-value | Weight (approx.) | | |
|-----|----|----------------------------------|---------------|------|----|------|-----------------------|------|------|------|------------------------|---------------------|------------------|------|------|
| | | | | | | | | | | | | | vd8 | vG ½ | |
| 1" | 16 | 25.4 x 1.65 | 22.1 | 21 | 52 | 50.4 | 19 | 21 | G½ | Ø 8 | 0 - 2.5 ³⁾ | 6.50 | 0.10 | 0.23 | |
| 1½" | | 38.1 x 1.65 | 34.8 | | | | 30 | 32 | | | 0 - 2.5 ²⁾ | 1.80 | 0.14 | 0.27 | |
| 2" | | 50.8 x 1.65 | 47.5 | | | | 64 | 45 | | | 47 | 0 - 1 ²⁾ | 0.45 | 0.20 | 0.33 |
| 2½" | | 63.5 x 1.65 | 60.2 | | | | 77.4 | 56 | | | 58 | 0 - 1 ¹⁾ | 0.90 | 0.12 | 0.45 |
| 3" | 10 | 76.2 x 1.65 | 72.9 | 90.9 | 66 | 68 | 0 - 0.6 ¹⁾ | 0.73 | 0.40 | 0.53 | | | | | |

¹⁾ for bourdon tube pressure gauge NG 100

²⁾ for bourdon tube pressure gauge RCh / RChG 100-3 without limit switch contact assembly

³⁾ for bourdon tube pressure gauge RCh / RChG 63-3 without limit switch contact assembly

⁴⁾ BioConnect® is a registered word mark of NEUMO GmbH & Co. KG.

* = external diameter diaphragm