

Diaphragm Seal

Plastic version, PN 10

Female thread

MDM 7190

Information on applications, features, metrological influences such as temperature, level difference, floating time and others can be found in model overview 7000. Furthermore, you will find information on other chemical seal versions.

Application

Diaphragm seal models 7190 are suitable for neutral and aggressive media that are not adhesive or contaminated, and which do not corrode the materials listed below. Besides pressure gauges, also pressure switches, transmitters and pressure transducers up to PN 10 can be attached.

Construction

The diaphragm is fixed between upper and lower part. The measuring instrument and the chemical seal are fitted after being filled separately.

Standard Versions

Materials

Upper part	PP (polypropylene), fibre-glass reinforced, colour: red (RAL 2004)		
Lower part	PVC-U (polyvinyl chloride), colour: grey (RAL 7011)	PP (polypropylene), colour: grey-beige (RAL 7032)	PVDF (polyvinylidene fluoride), colour: opaque, yellow white
Process connection outside	glue joint DIN 8063-8	welding piece DIN 16962-3	
Diaphragm	EPDM, medium side PTFE-coated		

Instrument Connection

G ¼ female or
G ½ female

Process Connection

G ¼ female or
G ½ female

Nominal Pressure

PN 10 at +20 °C (+68 °F),
see pressure-temperature-diagram on page 2

Filling Fluid

FA7 (Glystantin®)

Reference Temperature

+20 °C (+68 °F)

Minimum Span Pressure Gauges

0 – 2.5 bar for Bourdon tube pressure gauges NCS 100 (4") and smaller
(not suitable for vacuum or compound ranges)
for other pressure measuring instruments: upon request



Options and Special Versions (Upon Request)

- Process connection ½" NPT female or ¼" NPT female
- Direct mounting to pressure gauges, including standard liquid FA7 (Glystantin®)
- Mounting with capillary line or cooling element
- Capillary line between chemical seal and measuring instrument, please regard:
 - a mounting device for the measuring instrument is required, e.g. front flange for panel mounting, back flange for surface mounting or gauge holder bracket
 - the permissible capillary line length depends on pressure range and filling fluid, details upon request

Ordering Information Chemical Seal

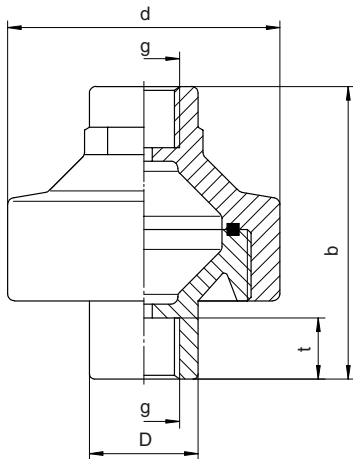
Please regard our detailed ordering information

- in model overview 7000
- in the check lists for pressure measuring instruments with chemical seal
- in the corresponding data sheet for the required pressure measuring instrument and add the information for the respective chemical seal:

Model	7190
Instrument connection	G ¼ female
Process connection	G ½ female, PVC-U
Options, if necessary	process connection ½" NPT female

Example: **7190, G ¼, G ½**

Dimensional Drawing



Dimensional Data (mm/inch) and Weights (kg/lb)								
D	PN	b ^{±1.5}	d	g	t	Weights		
						PVC-U	PP	PVDF
25 0.98	10 0.39	86 3.39	80 3.15	G ¼	18 0.71	0.25 0.55	0.18 0.4	0.31 0.68
32 1.26				G ½	22 0.87	0.46 1.01	0.32 0.71	0.59 1.3

Pressure-Temperature-Diagram (bar/°C)

