

Capsule Gauges for Low Pressure

Bayonet ring case stainless steel

KPCh 63

KPChG 63

Standard Versions

Information on general and metrological features (e.g. load limits/temperature resistance) and standard pressure ranges/scale divisions can be found in model overview 6000.

Accuracy (DIN EN 837-3)

Class 1.6

Case

With bayonet ring, stainless steel 304 (1.4301)

Degree of Protection (DIN EN 60 529/IEC 529)

IP44 for model KPCh with bottom connection

IP65 for model KPChG

Case Ventilation

Model KPChG case ventilation closable
ventilation required for internal pressure compensation

Case Filling

Model KPChG glycerin

Nominal Case Size

63 mm (2 1/2")

Wetted Parts

Type – 1	connection	brass
	diaphragm capsule	CuBe alloy
	O-ring sealing	NBR
Type – 3	connection	stainless steel 316L (1.4404)
	diaphragm capsule	stainless steel 316L (1.4404)
	O-ring sealing	FPM

Case Configuration

Connection	screwed
Position of the connection	- bottom connection - centre back connection (rm)
Mounting device	- without - back flange for surface mounting (Rh) - front flange for panel mounting (Fr)

Pressure Ranges (DIN EN 837-3)

Model KPCh	0 – 25 mbar to 0 – 600 mbar (0 – 10 inH ₂ O to 0 – 250 inH ₂ O)
Model KPChG	0 – 100 mbar to 0 – 600 mbar (0 – 40 inH ₂ O to 0 – 250 inH ₂ O)

Process Connection

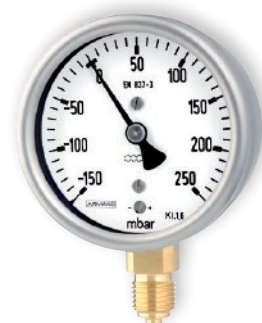
G 1/4 B (1/4" BSP)

Window

Model KPCh	instrument glass	for type – 1
	laminated safety glass	for type – 3

specifics for case configuration Fr
polycarbonate
(with punched hole for zero adjustment)

Model KPChG	polycarbonate (with punched hole for zero adjustment)
-------------	--



Movement

Brass/German silver	for type – 1
Stainless steel	for type – 3

Dial

Aluminum white, scale black

Pointer

Aluminum black

Zero Adjustment

On the front side

Ordering Information, Standard Pressure Ranges, Options

See pages 3 and 4

Further Options

- Position of connection radial at 3 o'clock, 9 o'clock, 12 o'clock or position of connection other than vertical installation (90°) for models without case filling
- GOST version for Russia and Kazakhstan

Special Versions Upon Request

- Other process connections
- Other pressure ranges and/or special scales, e.g. dual scale mbar/kPa, coloured fields or ranges, dial inscriptions, negative scale
- Case parts 316L (1.4404)
- Increased degree of protection, e.g. IP65
- Wetted parts free of grease and oil for type – 3
- Oxygen version for type – 3 (without case filling)
- Version for higher medium temperatures
- Other position of connection

Accessories

See catalogue heading 11

www.armano-messtechnik.com

ARMANO

ARMANO Messtechnik GmbH

Location Beierfeld

Am Gewerbepark 9 • 08344 Grünhain-Beierfeld
Tel.: +49 3774 58 – 0 • Fax: +49 3774 58 – 545
mail@armano-beierfeld.com

Location Wesel

Manometerstraße 5 • 46487 Wesel-Ginderich
Tel.: +49 2803 9130 – 0 • Fax: +49 2803 1035
mail@armano-wesel.com

6211

03/22

Case Configurations, Code Letters, Dimensional Data and Weight, Case Ventilation

Bottom Connection												Centre Back Connection							
without mounting device												without mounting device							
without code letters												code letters rm							
with back flange for surface mounting												with back flange for surface mounting							
code letters Rh												code letters rmRh							
												(available upon request, but not recommended according to DIN EN 837-3)							
with front flange for panel mounting												with front flange for panel mounting							
code letters Fr												code letters rmFr							
												(available upon request, but not recommended according to DIN EN 837-3)							
front flange with slotted holes, separate cover ring, recommended panel cut out: $\varnothing 67 \pm 0.3 \text{ mm}$ ($2.64 \pm 0.01''$)																			

Dimensional Data (mm/inch) and Weight (kg/lb)																			
NCS	a	a1	b	b1	b2	b3	c	c1	c2	c3	D	D1	D2	d1	d2	d3	G	G1	
63	KPCh	10 0.39	13 0.51	38 1.5	37 1.46	41 1.61	40 1.57	5 0.2	2 0.08	13 0.51	13 0.51	64 2.52	62 2.44	66 2.6	75 2.95	85 3.35	3.6 0.14	G 1/4B M12x1.5	1/4" NPT
63	KPChG	10 0.39	13 0.51	47 1.85	37 1.46	50 1.97	40 1.57	5 0.2	2 0.08	13 0.51	13 0.51	64 2.52	62 2.44	66 2.6	75 2.95	85 3.35	3.6 0.14	G 1/4B M12x1.5	1/4" NPT
63	10-fold üs KPCh/KPChG	10 0.39	13 0.51	47 1.85	47 1.85	50 1.97	50 1.97	5 0.2	2 0.08	13 0.51	13 0.51	64 2.52	62 2.44	66 2.6	75 2.95	85 3.35	3.6 0.14	G 1/4B M12x1.5	1/4" NPT

g	g1	h ^{±1}	h1 ^{±1}	s	s1	s3	SW	approx. weight ¹⁾
60 2.36	60 2.36	54 2.13	54 2.13	5 0.2	2 0.08	5.5 0.22	14 0.55	0.21 0.46
60 2.36	60 2.36	54 2.13	54 2.13	5 0.2	2 0.08	5.5 0.22	14 0.55	0.26 0.57
70 2.76	70 2.76	54 2.13	54 2.13	5 0.2	2 0.08	5.5 0.22	14 0.55	0.21 / 0.26 0.46 / 0.55

Case Ventilation

Model KPChG
case ventilation no. 26
(reclosable, IP65)

¹⁾ data for versions without mounting device

Ordering Information

Basic Model		Capsule Gauge for Low Pressure with Bayonet Ring Case				KPCh	
Case filling	without					without code letters	
	glycerin					G	
Nominal case size	case Ø 63 mm (2½")				63		
Wetted material	copper alloy				- 1		
	stainless steel				- 3		
Case configuration	case/connection	screwed				without code letters	
	position of the connection	bottom connection				without code letters	
		centre back connection				rm	
mounting device	without				without code letters		
	back flange for surface mounting				Rh		
	front flange for panel mounting				Fr		
Pressure ranges	mbar			inH ₂ O			
	vacuum	compound	pressure	vacuum	compound	pressure	
	-25 / 0	-10 / +15	0 - 25	-10 / 0	-4 / +6	0 - 10	
		-15 / +10			-6 / +4		
	-40 / 0	-15 / +25	0 - 40	-16 / 0	-6 / +10	0 - 16	
		-25 / +15			-10 / +6		
	-60 / 0	-20 / +40	0 - 60	-25 / 0	-10 / +15	0 - 25	
		-40 / +20			-15 / +10		
	-100 / 0	-40 / +60	0 - 100	-40 / 0	-15 / +25	0 - 40	
		-60 / +40			-25 / +15		
	-160 / 0	-60 / +100	0 - 160	-60 / 0	-20 / +40	0 - 60	e.g. 0 - 160 mbar
	-100 / +60			-40 / +20			
-250 / 0	-100 / +150	0 - 250	-100 / 0	-40 / +60	0 - 100		
	-150 / +100			-60 / +40			
-400 / 0	-150 / +250	0 - 400	-160 / 0	-60 / +100	0 - 160		
	-250 / +150			-100 / +60			
-600 / 0	-200 / +400	0 - 600	-250 / 0	-100 / +150	0 - 250		
	-400 / +200			-150 / +100			
Process connection	standard thread	G ¼ B				G ¼ B	
	options	¼" NPT				¼" NPT	
		M 12x1.5				M 12x1.5	
		G ⅜ B				G ⅜ B	
		⅜" NPT				⅜" NPT	
	M 10x1				M 10x1		
Options	see page 4						

Example

KPCh 63 - 1, 0 - 160 mbar, G ¼ B

