

Bourdon Tube Pressure Gauges

Bayonet Ring Case Stainless Steel,
DW-Line (Double Weld)

RCh 63-3vDW
RChG 63-3vDW

Standard Versions

Information on general and metrological features (load limits / temperature limitations) and standard pressure ranges / scale divisions can be found in model overview 1000.

Accuracy (EN 837-1)

Class 1.6

Case

Bayonet ring, 1.4301 (304 stainless steel)

Case Protection Type (EN 60 529 / IEC 529)

IP 54,

IP 65 for model RChG with closed blow-out plug

Blow-out Device

Blow-out plug at the top of the case coverage

Case Ventilation

By blow-out plug, ventilation required for internal pressure compensation for pressure ranges ≤ 10 bar and also recommended for other pressure ranges, as far as the operating conditions allow this.

Case Filling

for model RChG: glycerine

Nominal Case Size

63 (mm) (2½")

Wetted Parts

Connection: 1.4571 (316 stainless steel)
Bourdon Tube: 1.4571 (316 stainless steel),
argon arc welding,
 ≤ 100 bar (1,500 psi) c-form,
 ≥ 160 bar (2,000 psi) helical

Case Configuration

Connection: welded
Position of the connection: bottom connection,
optional centre back connection (rm)

Pressure Ranges (EN 837-1)

0-1 bar (0-15 psi) to 0-600 bar (0-10,000 psi)

Process Connection

Connection piece d8 x 5
for welding at the chemical seal

Window

Laminated safety glass

Movement

Stainless steel

Dial

Aluminum, black figures, white background

Pointer

Aluminum, black

Safety Category according to EN 837-1

S2 safety pressure gauge, proved



NEW DW-Line (Double Weld)

Pressure gauges RCh/RChG 63-3vDW (case / connection piece welded) welded with chemical seal MDM 7...vd8

Ordering Information, Standard Pressure Ranges, Options:

see pages 3 and 4

Special Versions and further Options among others

- Other pressure ranges and / or special scales, e.g. double scale bar/psi, coloured fields or areas, dial inscriptions, negative scale etc.
- Min.- or max.-drag indicator upon request
- Case parts 1.4404 (316 L stainless steel) upon request
- Increased case protection type, e. g. IP 65 without case filling, upon request
- Other case fillings upon request
- Model RChG for ambient temperatures down to -40 °C (-40 °F) upon request
- Position of connection radial at 3 o'clock, 9 o'clock or 12 o'clock (others upon request) or other than vertical installation (90°):
 - for models without case filling and for filled models with pressure equalizing membrane;
 - for filled models without pressure equalizing membrane upon request
- GOST-version for Russia, Ukraine, Kazakhstan

Accessory:

Chemical seals, sealings,
process connection pieces: see catalogue-heading 7



Sales and Export South, West, North

ARMATURENBAU GmbH

Manometerstraße 5 • D-46487 Wesel - Ginderich
Tel.: +49(0)28 03/91 30-0 • Fax: +49(0)28 03 / 10 35
armaturenbau.com • mail@armaturenbau.com

Subsidiary Company, Sales and Export East

MANOTHERM Beierfeld GmbH

Am Gewerbepark 9 • D-08344 Grünhain-Beierfeld
Tel.: +49(0)37 74 / 58-0 • Fax: +49(0)37 74 / 58-545
manotherm.com • mail@manotherm.com

1211.7

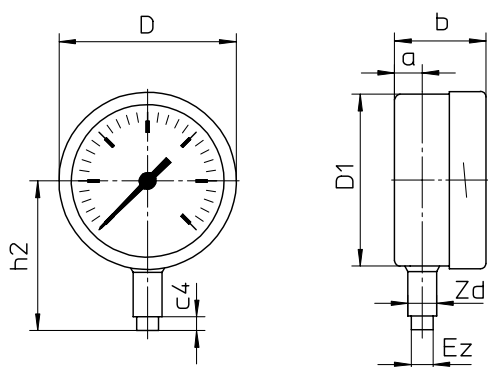
10/10

Case Configuration, Code Letters, Dimensional Data and Weights, Blow-out Device

Bottom connection

No mounting device

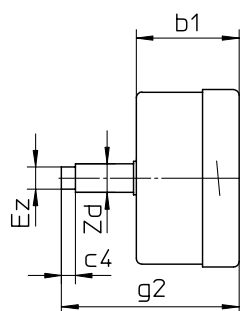
(no additional code letters)



Centre back connection

No mounting device

code letters: **rm**

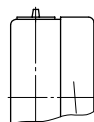


Dimensional data (mm / inches) and weights (kg / lb)

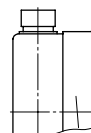
NCS	a	b	b1	c4	D	D1	Ez	g2	h2 ^{±1}	Zd ^{+0,5}	approx. Weight	
											RCh	RChG
63	10	33	37	5	64	62	8	64	54	10	0.18	0.25
2½"	.39	1.3	1.46	.2	2.52	2.44	.31	2.52	2.13	.39	.4	.56

Blow-out device

Blow-out plug 19



Blow-out plug 24



Ordering Information with Standard Pressure Ranges, Options

Basic Model:	Bourdon Tube Pressure Gauge, Bayonet Ring Case		RCh	
Case Filling	without		without code letters	
	glycerine		G	
	fillable version		(G)	
Nominal Case Size:	case- Ø 63 (mm) (2½")		63	
Wetted Material:	stainless steel		-3	
Case Configuration:	case / connection	welded	v	
	position of the connection:	bottom connection	without code letters	
		centre back connection	rm	
Pressure Ranges:	-1,200 – 0 mbar	30" Hg vac. – 0		
	-1 – 0 bar			
	-1 – 0,6 bar	30" Hg vac. – 15 psi		
	-1 – 1.5 bar	30" Hg vac. – 30 psi		
	-1 – 3 bar	30" Hg vac. – 60 psi		
	-1 – 5 bar	30" Hg vac. – 100 psi		
	-1 – 9 bar	30" Hg vac. – 160 psi		
	-1 – 15 bar	30" Hg vac. – 200 psi		
	0 – 1 bar	0 – 15 psi		
	0 – 1.6 bar			
	0 – 2.5 bar	0 – 30 psi		
	0 – 4 bar	0 – 60 psi		
	0 – 6 bar	0 – 100 psi	e. g. 0-6 bar	
	0 – 10 bar	0 – 160 psi		
	0 – 16 bar	0 – 200 psi		
	0 – 25 bar	0 – 300 psi		
	0 – 40 bar	0 – 600 psi		
	0 – 60 bar	0 – 800 psi		
		0 – 1,000 psi		
	0 – 100 bar	0 – 1,500 psi		
	0 – 160 bar	0 – 2,000 psi		
	0 – 250 bar	0 – 3,000 psi		
	0 – 400 bar	0 – 5,000 psi		
	0 – 600 bar	0 – 10,000 psi		
	Process Connection:	connection piece for welding d 8x5		d 8 x 5
	Options:	see page 4		
Example:	RCh 63-3v rm, 0-6 bar, d 8 x 5			

Further Options regarding Ordering Information

Basic Model: Bourdon Tube Pressure Gauge, Bayonet Ring Case		RCh	
Model Code:		see page 3	
Options:	adjustable pointer		
	red mark on the dial		
	stationary red pointer on the dial		
		adjustable when removable ring	
	stationary red pointer	integrated into polycarbonate window, adjustable externally	removable key non-removable key
	special adjustment (reference points = odd values, e. g. 100 KN = 8.735 bar)		
	window acrylic glass (PMMA) ¹⁾		(order at the moment still as cleartext)
		polycarbonate (PC)	
	pressure equalizing membrane for model RChG with blow-out device Ø 1" (25 mm) in the back of the case when bottom connection		
	case polished		
	bayonet ring polished		
	silicone-free version		
	measuring point marking	stainless steel-plate 12 mm x 55 mm (0.47" x 2.17"), wire mounting sticker on case coverage	

Special Versions: Please describe your requirements clearly

¹⁾ not for S2 Technical changes, replacement of materials and errors excepted