

Shut-off Cocks

G ½ B (½" BSP)

Process Connection

Socket G ½ B (½" BSP)

Instrument Connection

Clamping sleeve G ½

Nominal Pressure

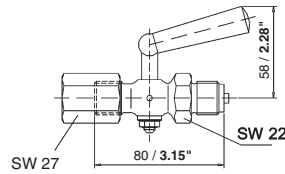
PN 16

Handle

Plastic

Materials

- Brass (clamping sleeve made of phosphated steel)
- Alloy steel
- Stainless steel 316Ti (1.4571)



M20x1.5

Process Connection

Socket M20x1.5

Instrument Connection

Clamping sleeve M20x1.5, SW 27

Nominal Pressure

PN 16

Handle

Plastic

Materials

- Brass (clamping sleeve made of phosphated steel)
- Alloy steel
- Stainless steel 316Ti (1.4571)

Pressure Gauge Cocks with Test Connection

Test Flange 60x25x10 mm (2.36x0.98x0.39")

Process Connection

Socket G ½ B (½" BSP)

Instrument Connection

Clamping sleeve G ½

Nominal Pressure

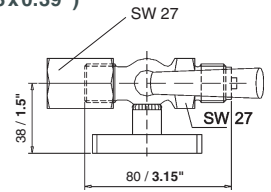
PN 16

Handle

Plastic

Materials

- Brass (clamping sleeve and protection cap made of phosphated steel)
- Alloy steel
- Stainless steel 316Ti (1.4571)



M20x1.5

Process Connection

Socket M20x1.5

Instrument Connection

Clamping sleeve G ½

Nominal Pressure

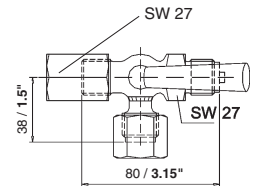
PN 16

Handle

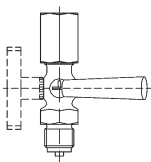
Plastic

Materials

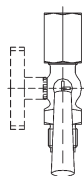
- Brass (clamping sleeve and protection cap made of phosphated steel)
- Alloy steel
- Stainless steel 316Ti (1.4571)



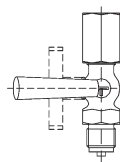
The operating positions are engraved on the plug of the cock:



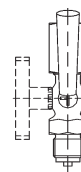
Vent ("Entlüften")



Operation ("Betrieb")



Blow-out ("Ausblasen")



Test ("Prüfen")
(only for cock with test connection)

Application Ranges

- Liquids, gases or vapours from -10 / +50 °C (14 – 122 °F)
- Connection to pressure gauges with flat gasket according to DIN EN 837-1 (DIN 16 258)

Special Versions

- Pressure gauge cocks with test connection DIN 16 263 socket M20x1.5, process connection male M20x1.5, instrument connection clamping sleeve M20x1.5 upon request
- Other special versions upon request