

# Flushing Ring

## for Flange Type Diaphragm Seals and for Cellular Type ("Pancake") Diaphragm Seals

### Standard Versions

#### Application

Flushing rings for flange and cellular type chemical seals (compare data sheets 7500 and 7505) can be mounted between the process connection and the chemical seal, if media residues or cloggings are to be expected at the diaphragm seal connection.

The two flushing ports allow for purging of accumulated particles in front of the diaphragm and for ventilation of the pressure space.

#### Body

Stainless steel 1.4404 (316 L)

#### Purge Bores

2 x ½" NPT

#### Screw Plugs

2 pieces ½" NPT, 1.4404 (316 L), for purge bores

#### NACE resp. Sour Gas Application

The material we use complies with the NACE MR 0175 standards (NACE 0103 upon request). Only material with test certification is used.

#### Process connection

DN 25, 50, 80, 100, PN 16 ... 400, for flanges according to DIN EN 1092-1 with sealing face Form B1, stamped B

for flanges according to ASME (Class 150 ... 2500)

NPS 1", 2", 3", 4",

sealing face Raised Face (RF) for ASME B 16.5 or JIS B 2220

#### Sealing

The suitable standardized sealing elements have to be used. The sealings are not within the scope of delivery.



### Special Versions and Others

- Other nominal width upon request
- Other sealing face, e.g. Form B2 according to EN 1092-1 upon request
- Groove or tongue DIN EN 1092-1, RJF-groove ASME B 16.5 and others upon request
- Other materials, e.g. 1.4539, Hastelloy B2, C4 or C276, Monel, nickel or titanium upon request
- Other flushing connections, e.g. female thread ¼" NPT, G ½, G ¼, male thread (adapter) ½" NPT, ¼" NPT, G ½ B, G ¼ B, others upon request
- Tube socket, e.g. VCR

### Mounting / Certificates

Information on mounting and certificates are available upon request.

### Ordering Information Chemical Seals

Please note our detailed ordering information in model overview 7000.

Model code:	<b>SpR</b>
Material:	<b>Stainless steel 1.4404 (316 L)</b>
Flushing connection:	½" NPT = standard, others see above
Process connection:	DN 50, DN 80 or DN 100, ASME NPS 2", 3" or 4"
Specifics:	see above



Sales and Export South, West, North

### ARMATURENBau GmbH

Manometerstraße 5 • D – 46487 Wesel-Ginderich  
Tel.: +49 2803 9130 – 0 • Fax: +49 2803 1035  
armaturenbaum.com • mail@armaturenbaum.com

Subsidiary Company, Sales and Export East

### MANOTHERM Beierfeld GmbH

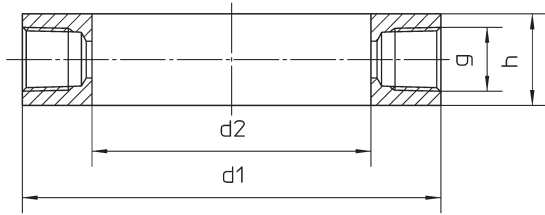
Am Gewerbepark 9 • D – 08344 Grünhain-Beierfeld  
Tel.: +49 3774 58 – 0 • Fax: +49 3774 58 – 545  
manotherm.com • mail@manotherm.com

# 7001

04/15

# Dimensional Drawing, Dimensional Data and Weight

## Flushing Ring



Connections according to DIN EN 1092-1, sealing face Form B1

### Dimensions (mm / inch) and Weight (kg / lb)

DN	PN	d1	d2	g	h	Weight (approx.)
25	16 ... 400 bar	68 <b>2.68</b>	25 <b>0.98</b>	½" NPT	30 <b>1.18</b>	0.750 <b>1.65</b>
50		102 <b>4.02</b>	62 <b>2.44</b>			1.100 <b>2.40</b>
80		138 <b>5.43</b>	92 <b>3.62</b>			1.900 <b>4.20</b>
100		162 <b>6.38</b>	92 <b>3.62</b>			3.150 <b>6.90</b>

Connections according to ASME

### Dimensions (mm / inch) and Weight (kg / lb)

NPS	Class	d1	d2	g	h	Weight (approx.)
1"	150 ... 2500	51 <b>2.01</b>	27 <b>1.06</b>	½" NPT	30 <b>1.18</b>	0.300 <b>0.66</b>
2"		92 <b>3.62</b>	62 <b>2.44</b>			0.600 <b>1.30</b>
3"		127 <b>5</b>	92 <b>3.62</b>			1.050 <b>2.30</b>
4"		157 <b>6.18</b>	92 <b>3.62</b>			2.850 <b>6.30</b>

## Mounting Diagram

